

### About NEAT

NEAT is a mixed multi-academy trust of non-faith and faith schools across north east England. We have a clear vision about what we want to achieve and core values about how we do it.

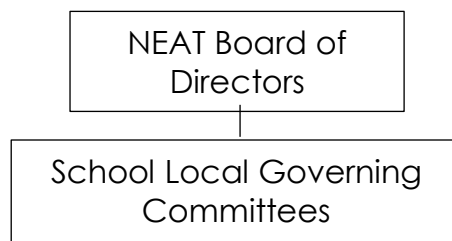
We work as one trust, however each school has its own ethos.

There are five schools in the East End of Newcastle upon Tyne:

- Benfield School
  - Central Walker Church of England Primary School
  - Tyneview Primary School
  - Walkergate Community School
  - West Walker Primary School
- and one school in Hartlepool:
- St Hild's Church of England School.

### What do local governors do?

Each school has its own Local Governing Committee (LGC), which is the "eyes and ears" of the Trust Board.



Each LGC carries out its own programme of scrutiny and evaluation to check how well the school is performing on priorities such as pupil welfare and the curriculum. This may involve governors meeting with staff to find out more and listening to pupils and parents/carers talk about their experiences.

The LGC isn't involved in the day-to-day running of the school.

### Who are local governors?

All local governing committee members and the trust board are volunteers, although expenses can be claimed.

Our LGC members come from a wide range of backgrounds. What they have in common is that they want to help our schools be the best they can be and our pupils to succeed. People who know our local communities bring real insight to the LGC.

All LGC members have the opportunity to use and develop their skills in:

- building relationships and networks
- teamwork
- communication and influencing
- problem solving
- using data.

## Is any training needed?

You don't need any specific training to become a local governing committee member.

We offer:

- an awareness session for new recruits to welcome you to NEAT
- a structured induction programme to build the knowledge and skills that you need to be effective in your role
- access to resources and online learning
- National Governance Association membership
- an annual programme of development and networking opportunities
- an experienced "buddy".

## What does being a local governing committee member involve?

Most LGC members have a four-year term of office, except for co-opted members who are appointed for one year.

They attend around four meetings each year, which are usually held late afternoon/early evening during term-time.

LGC members are also involved in scrutiny activities in school, which usually happen once or twice a term during the school day.

The average time commitment is 5-8 hours per month.

## How do I become a local governing committee member?

There are different processes depending on whether you are eligible to be a parent member, staff member, trust member or co-opted member.

Please contact the NEAT Academy Trust Governance Team on 0191 2284090 or by email at [governance@neatat.org.uk](mailto:governance@neatat.org.uk) to find out more about opportunities.

Our family of schools really value the contribution that LGC members make.

**Thank you for your interest and please get in touch to find out more.**